

# WHB04B

Wireless handwheel with USB interface

40m barrier-free distance

Transmission stable wireless control



*CNC wireless operation*

# Machine operation

## Control and use diagram

It adopts wireless transmission technology, which is convenient to operate, eliminates the traditional spring connection, reduces the cable failure rate, and avoids cable drag, dust and pollution prevention.



# Application



Engraving machine



Deep hole drilling machine



Machining Center



Milling machine

Suitable for MACH3 system

Wide range of applications: laser cutting; flame plasma cutting; gantry lathes, etc.



## External description



Stable transmission Simple and convenient operation

## LCD Monitor Instruction

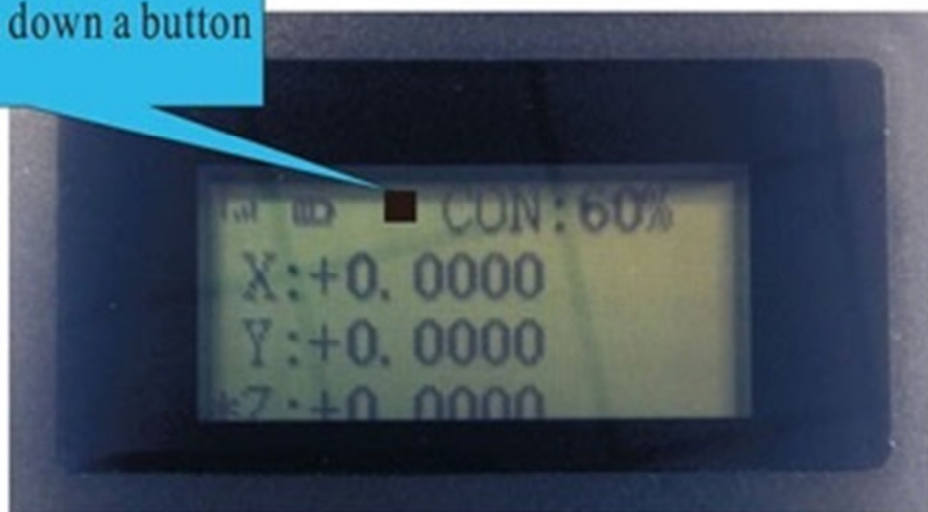
Explanation :

Key success indication: When you press the button, the receiver receives the key value, the indicator flashes 1 time, indicating successful key operation.

Speed indicator: When you press MPG button, band switch to select 2%, 5%..., LCD display CON and different speed. When you press Step button, band switch to select 0.001, 0.01..., LCD display Step and different speed.

Axis selected location: Axis selection switch position, LCD display axis selected. X: X axis workpiece coordinate axis, X1: X axis mechanical coordinate

Black iron will display after you press down a button



## LCD Monitor Instruction



When USB receiver and MPG connect unsuccessfully, For example, USB receiver do not plug into PC, our wireless handwheel will display status like above photo showed)

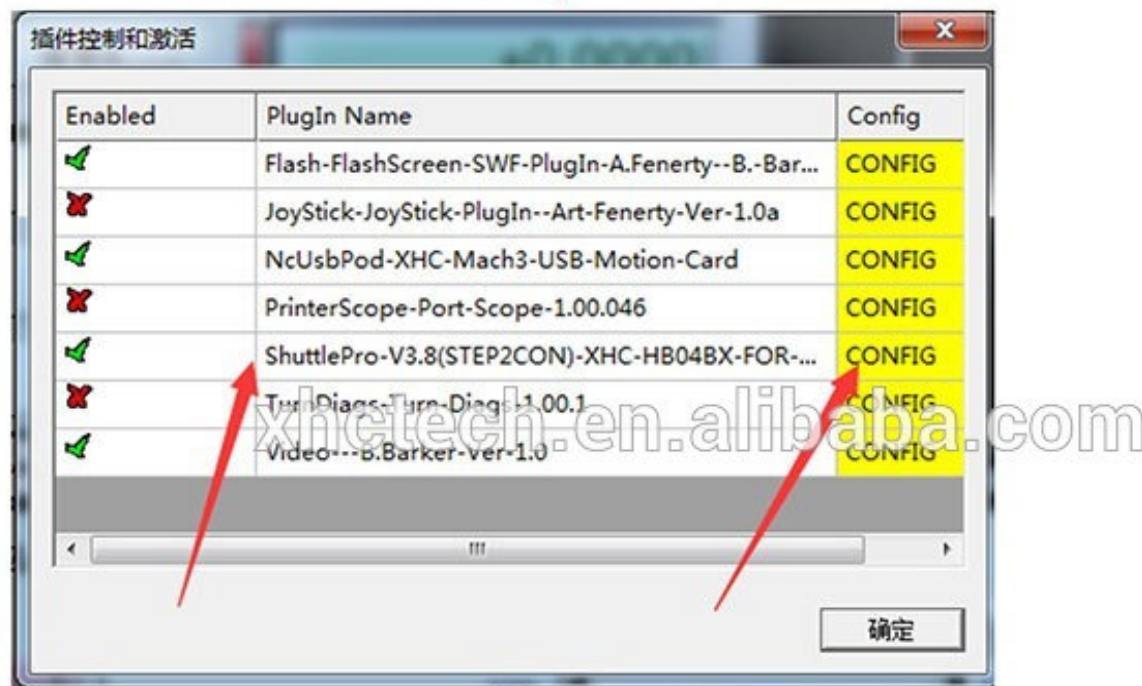
Now you need to check your USB receiver and try to take it off your PC and plug it again until the MPG back to working status.



## PlugIn instruction and setting

Open your mach3 software, choose **config plugIns** under Config menu, and find handwheel plugIn "ShuttlePro-VXX-XHC-HB04BX-FOR-MACH3" and click config in yellow color then you will enter handwheel config window, and you can set macro function key here

Please check the below photo for reference



After you open config window, like the photo showed. First step, click Macro-1 button and choose custommacro#1; and the same way to set Macro2-8. Then choose Macro-9 and set it into OEM button#1 and Macro-10 into OEM button#2. Then we can start set customs macro function now.

If you wanna set Macro-1 button, choose Macro number 1 and input Mcode you need. and the same way to set Macro2-8. If you wanna use your macro-9 for OEM, please use Custom OEM Code #1 and the same way to set macro-10 as Custom OEM Code #2. Check the photo in next page.

**Note:** Mcode you input must have already copy to mach3/Macro/Mach3Mill folder. Otherwise it will not work.

## Macro Function Key Setting

XHC HB04BX-3.8-Configuration

Custom Key As You Do

1

Macro-1

Custom Macro #1

Custom Macro #1

Custom Macro #2

CV feed toggle

Cycle MPG jogging mode

Flood on/off

FeedUp

FeedDn

Feedrate reset

Goto Z's

Go Home

Goto Safe\_Z

Home All

Home Z (Turn)

Home X,Home Z

Ignore Tool Change togg

Jog Follow

Jog Toggle

Jog Step Incr++

Jog Step Incr--

Jog increment cycle

Joystick Toggle

Jog Step/Conti/MPG

Lock/Unlock Movement

Lock/Unlock Shuttle

Macro-2

Custom Macro #2

Macro-3

Custom Macro #3

Macro-4

Custom Macro #4

Macro-5

Custom Macro #5

Macro-6

Custom Macro #6

Macro-7

Custom Macro #7

Macro-8

Custom Macro #8

Macro-9

OEM Button #1

Macro-10

OEM Button #2

Please input Mach3 OEM Button Code Number:

Custom OEM Code #1

Macro number 1

Macro number 3

Macro number 5

Macro number 7

Custom OEM Code #2

Macro number 2

Macro number 4

Macro number 6

Macro number 8

ResetToDefault

OK

Custom OEM Code #1

1001

Macro number 1

930

Diagram illustrating the Macro Function Key Setting process. The main window shows a list of macros (Macro-1 to Macro-10) and a central image of the XHC HB04BX-3.8 control unit. Red arrows indicate the mapping of macro settings to the physical buttons on the control unit. A callout box shows the 'Custom OEM Code #1' set to 1001. Another callout box shows the 'Macro number 1' set to 930. The bottom of the window includes a 'ResetToDefault' button and an 'OK' button.